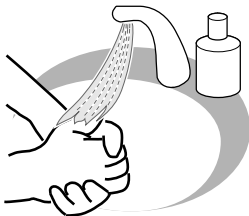


Brief instructions: Using the PARI PEP S system

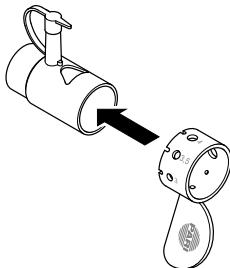
In all cases, please follow the instructions for use of the PARI PEP S system as well. The instructions include a detailed description, which accompanies every device. If the instructions for use are lost, another copy can be downloaded at www.pari.de, or call +49 (0) 81 51-2 79 279 to request a replacement.

1



- Before every inhalation session wash your hands thoroughly.

2



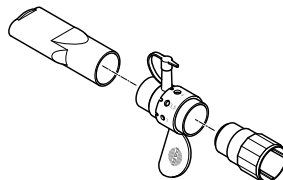
- Push the adjusting ring over the connecting element.

Info:

Small aperture = high resistance; large aperture = low resistance

3

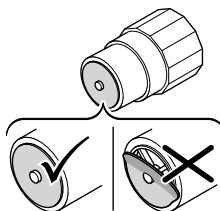
Treatment without a nebuliser



- Insert the inspiratory valve in the connecting element.
- Insert the mouthpiece on the other side of the connecting element.

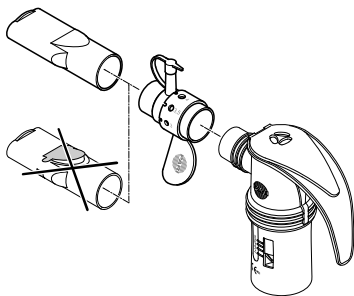
Info:

Make sure that the blue valve shim is seated correctly.



4

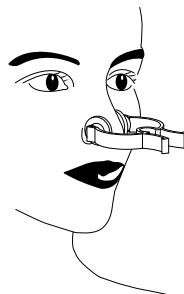
Treatment with a nebuliser



When treatment is carried out in conjunction with a nebuliser, it is essential to follow the instructions for use of the respective nebuliser as well.

- Assemble the nebuliser you are using (without mouthpiece).
- Attach the connecting element to the nebuliser.
- Attach the mouthpiece without expiratory valve to the connecting element.

5

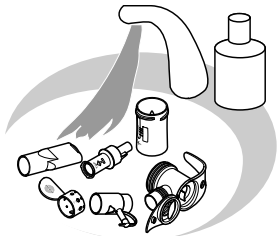


To ensure that the expiratory resistance is set correctly, it is important not to breathe through the nose while making the setting. Therefore, use the nose clip to make quite certain that you do not breathe through your nose.

Brief instructions: Using the PARI PEP S system

In all cases, please follow the instructions for use of the PARI PEP S system as well. The instructions include a detailed description, which accompanies every device. If the instructions for use are lost, another copy can be downloaded at www.pari.de, or call +49 (0) 81 51-2 79 279 to request a replacement.

6 Cleaning

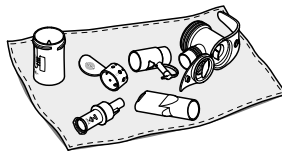


- Dismantle the nebuliser and the PARI PEP S system.
- Clean the individual parts using warm tap water and a little dishwashing liquid.
- Then rinse the parts thoroughly with running water.

7 Disinfection

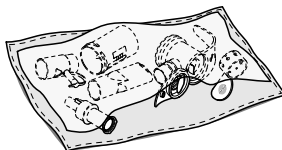
- Make sure that you use a sufficient quantity of boiling water for disinfecting the parts (5 min).

8 Drying



- Place the components separately on a dry, lint-free cloth.

9 Storage



- Store the parts in a dry place.

Your physiotherapist has adjusted this device specifically for you. Please follow the treatment regimen prescribed by your physiotherapist:

- Use aperture number _____ on the adjusting ring.
- Carry out the PEP treatment _____ times a day.
- Cough to clear the secretion after every _____ inhalation/exhalation cycles.

Specialists in effective inhalation



PARI GmbH

Moosstrasse 3 • D-82319 Starnberg • Germany

Tel.: +49 (0) 81 51-279 0 • Fax: +49 (0) 81 51-279 101

E-Mail: info@pari.de • www.pari.de